



# Northeast Region Labor Market Trends

**Jan Saxhaug**

**Regional Labor Market Analyst  
Labor Market Information Office**

# Labor Market Information (LMI) Office

- LMI Office supports state workforce and economic development systems by producing and disseminating data, key indicators, analysis, and trends on the economy, workforce, job market, and business community.
- LMI Office's high quality information advises policy makers on current and future economic trends, helps employers make informed business decisions, and assists individuals in making strong career choices.

# Minnesota Job Trend Overview

- Employment is growing
  - 49,996 more jobs compared to last October
  - Regained all jobs lost during the recession, plus 5,100 jobs
- Unemployment rate at 4.8% in October
  - Compared to a 7.3% rate in the United States
- Other positive signs
  - 9 of 11 major sectors show increases over-the-year
  - MN outpaces the nation in 6 of 11
  - The Avg. work week in Sept. up to 34.3 – matches previous high
  - MN slightly outpaces nation OTY job growth (1.8 to 1.7%)

# Over-the-year regional trends in Minnesota, October 2013

Metropolitan Statistical Area (MSA)	Numeric Employment Change	Percent Employment Change
Minneapolis-St. Paul MN-WI	42,878	2.4%
Duluth-Superior MN-WI	419	0.3%
Rochester	224	0.2%
St. Cloud	2,248	2.2%
Mankato	516	0.9%
Minnesota	49,996	1.8%
United States	2,299,000	1.7%

Data are September 2012 to September 2013.

Source: MN Dept of Employment & Economic Development

# NE Minnesota industry trends:

## Growing Industries

Industry	Employment		
	Q1 2012	Q1 2013	% Change
Chemical Manufacturing	209	308	47%
Electrical Equipment, Appliance, and Component Manufacturing	48	61	27%
Textile Product Mills	190	230	21%
Construction of Buildings	975	1155	18%
Primary Metal Manufacturing	410	484	18%
Real Estate	755	881	17%
Securities, Commodity Contracts, and Other Financial Investments and Related Activities	193	225	17%
Electronics and Appliance Stores	444	516	16%
Plastics and Rubber Products Manufacturing	312	357	14%

Source: Quarterly Census of Employment and Wages

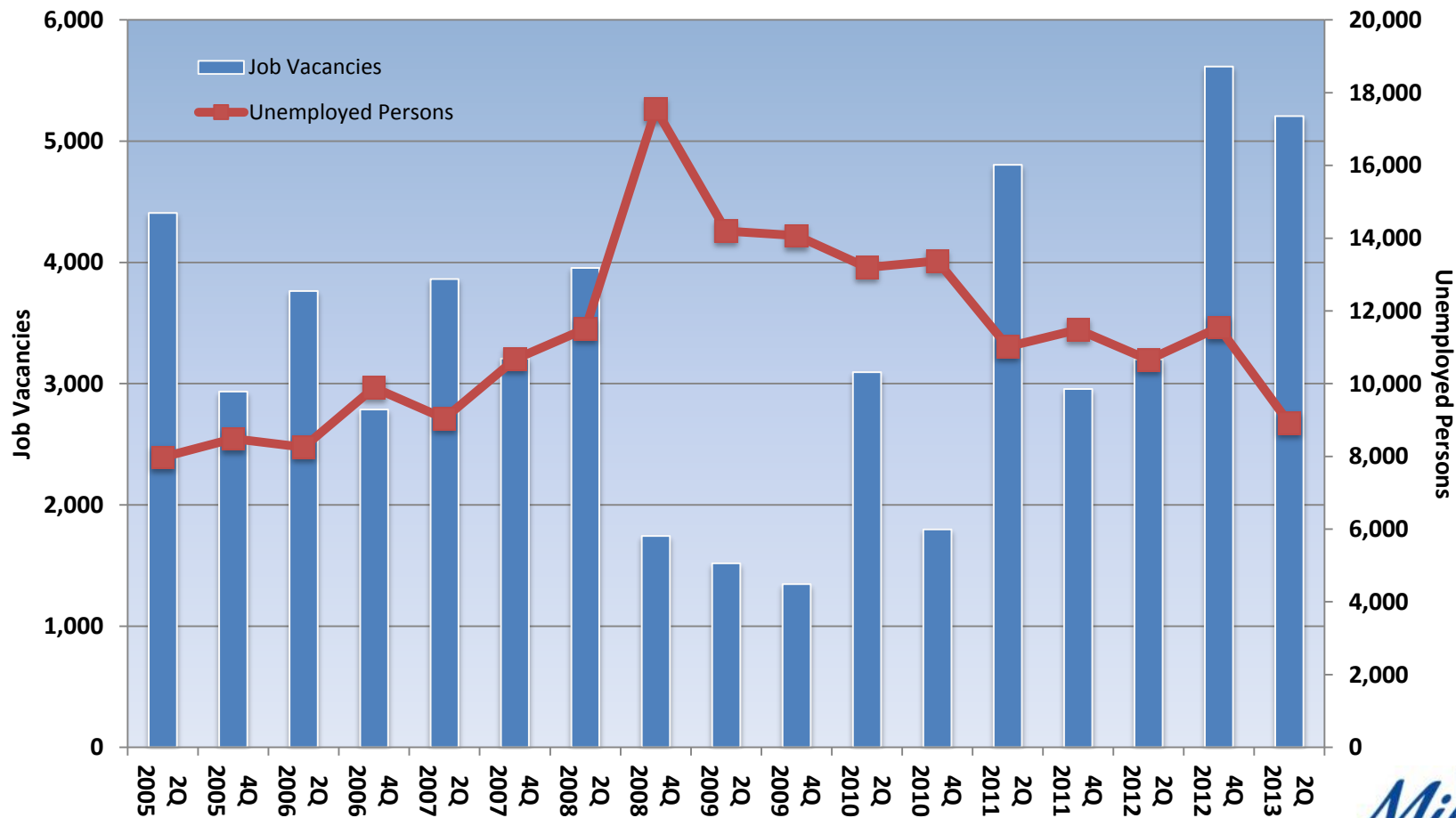
# NE Minnesota industry trends:

## Declining Industries

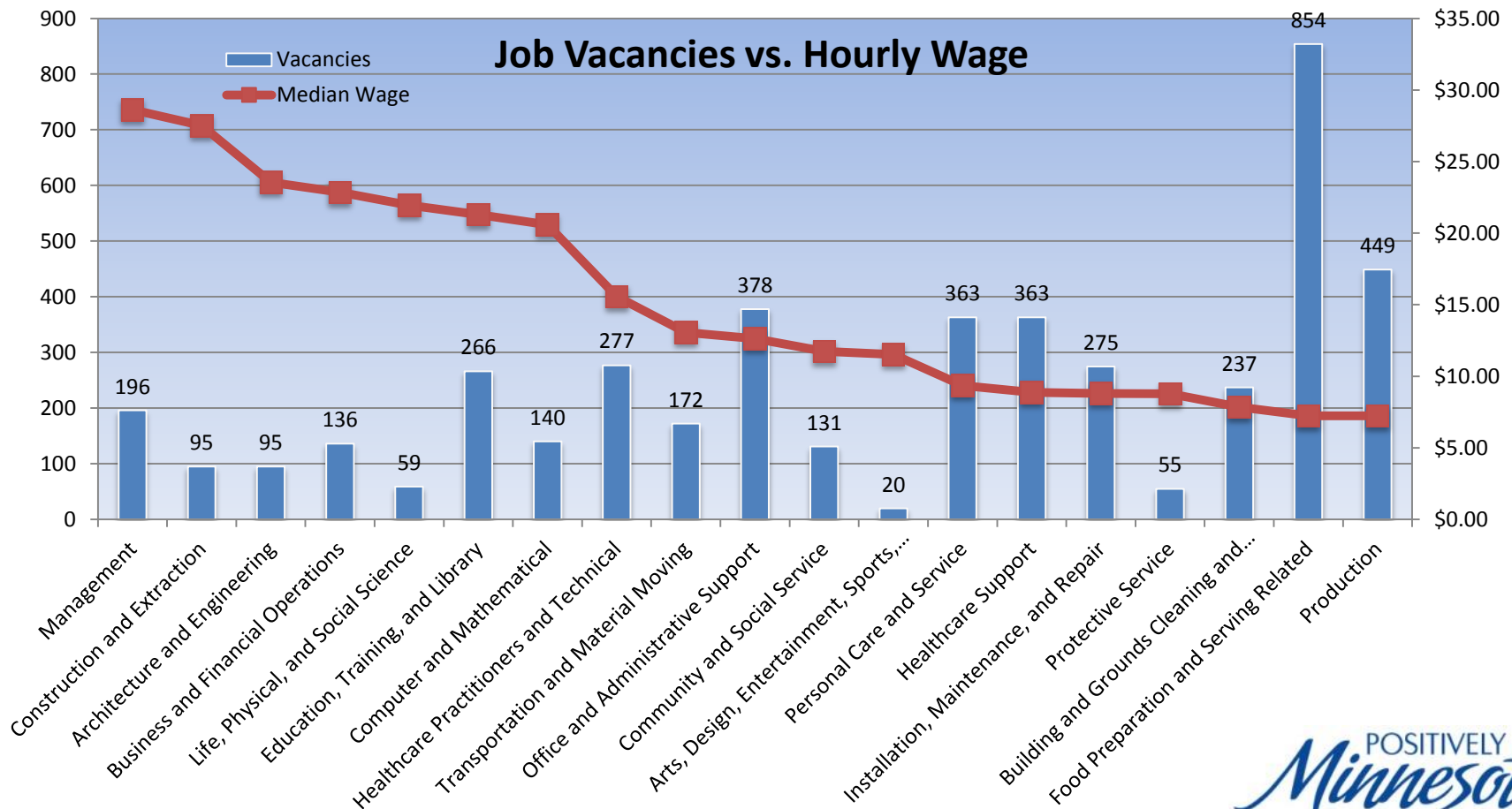
Industry	Employment		
	Q1 2012	Q1 2013	% Change
Personal and Laundry Services	979	906	-7%
Printing and Related Support Activities	211	195	-8%
Rental and Leasing Services	314	290	-8%
Telecommunications	461	413	-10%
Apparel Manufacturing	170	150	-12%
Fabricated Metal Product Manufacturing	934	810	-13%
Miscellaneous Manufacturing	161	139	-14%
Support Activities for Transportation	159	131	-18%
Wood Product Manufacturing	819	660	-19%

Source: Quarterly Census of Employment and Wages

# Job Vacancies in the NE Region are at all time highs

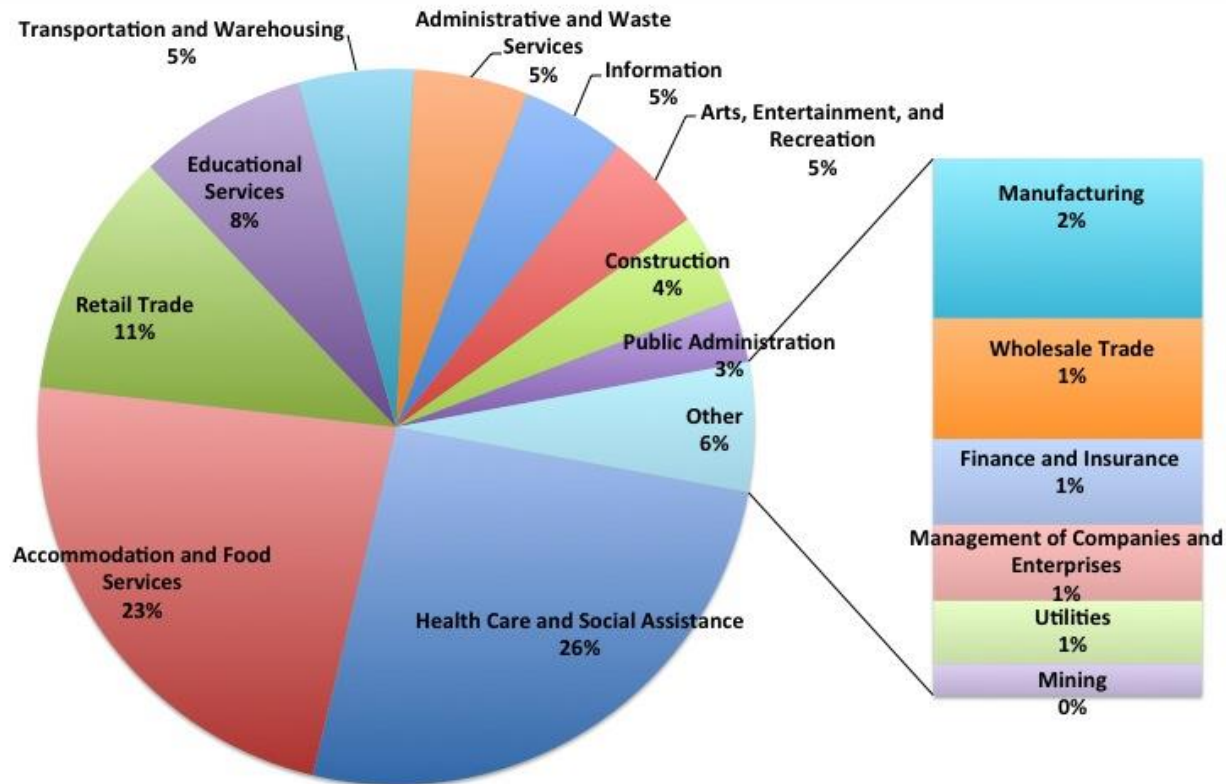


# Where are the vacancies?





# Regional job openings by industry

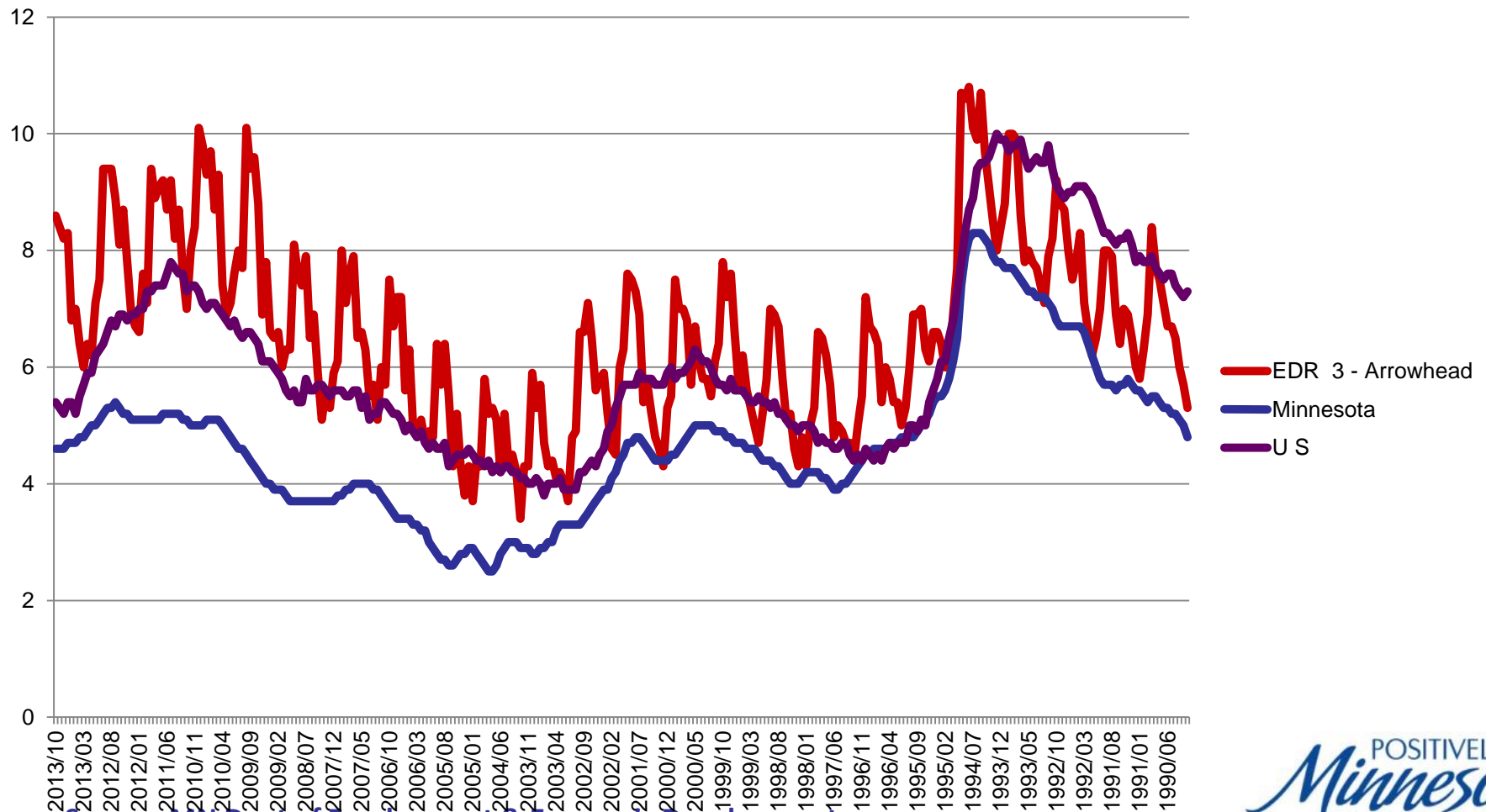


Source: MN Dept of Employment & Economic Development

# Top 12 occupations with the most openings in the NE Region

- Retail Sales Workers (543)
- Cooks and Food Preparation Workers (403)
- Food and Beverage Serving Workers (395)
- Nursing, Psychiatric, and Home Health Aides (345)
- Other Personal Care and Service Workers (343)
- Building Cleaning and Pest Control Workers (203)
- Health Technologists and Health Technicians (199)
- Electrical and Electronic Equipment Mechanics (178)
- Preschool, Primary, Secondary and Special Education Teachers (165)
- Computer Occupations (140)
- Councilors, Social Workers and Other... (130)
- Motor Vehicle Operators (127)

# Minnesota, U.S., and NE MN unemployment rates



Source: MN Dept of Employment & Economic Development

# Regional unemployment rates

Region	Unemployment Rate
EDR 3	5.3%
Duluth-Superior MSA	5.2%
Duluth	4.7%
Aitken County	5.2%
Carlton County	4.7%
Itasca County	5.7%
Koochiching County	7.7%
St. Louis County	5.3%
Lake County	4.4%
Cook County	4.3%

Source: MN Dept of Employment & Economic Development

# Forecasting future job trends

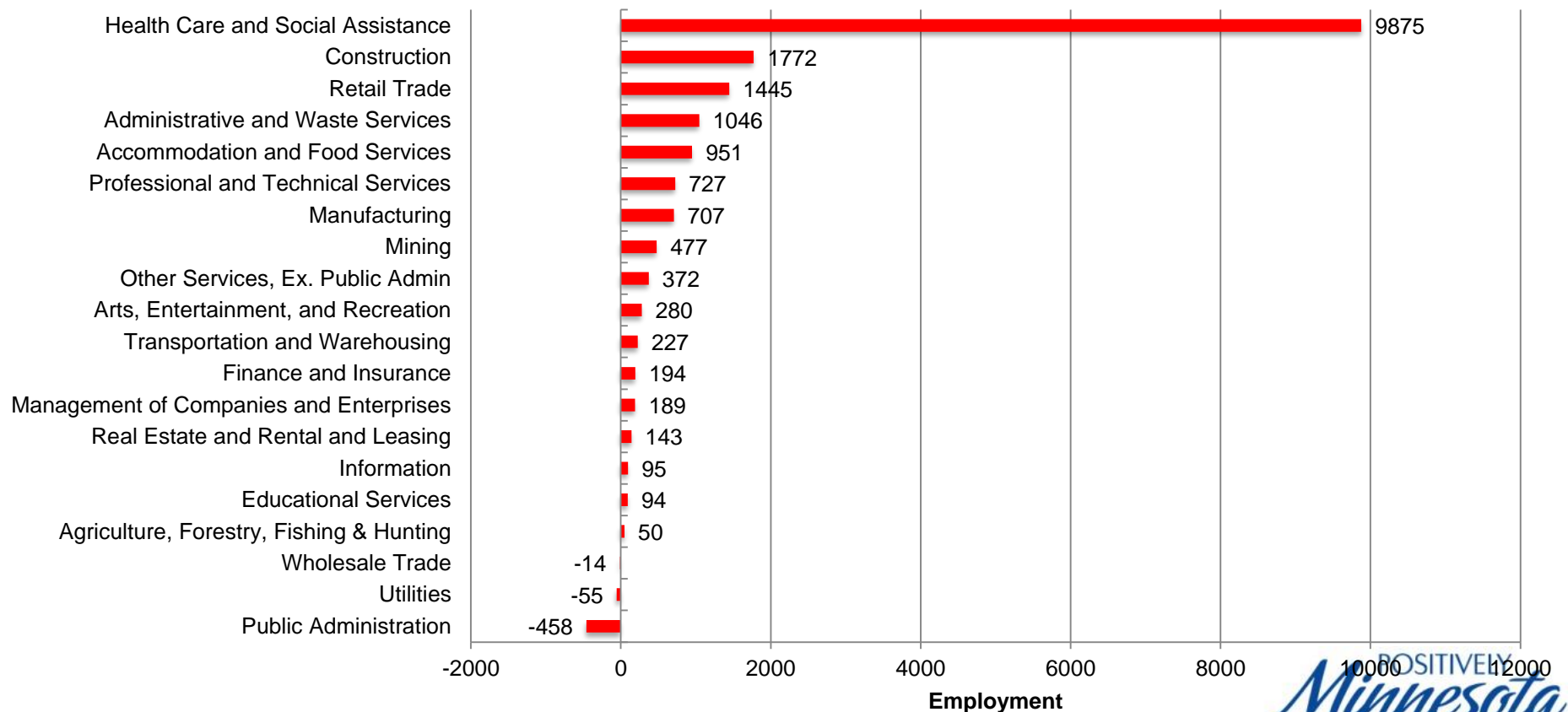
- In terms of jobs, the NE Minnesota economy is projected to grow by 13.1%, adding 20,350 jobs, between 2010 and 2020.
- A projected 36,840 new workers will be needed to take jobs left by people who leave or retire.
- 58,110 total openings
- Employment change projections depend on the demand for goods and services, productivity advances, technological innovations, and shifts in business practices.

# Assumptions

- Recovery from the steep job losses experienced between 2008 and 2010 will boost job growth in Minnesota during the next few years, but job growth will slow.
- Job growth over the next decade will average 1.3% a year, a pace similar to job growth experienced in 2011.
- The key macroeconomic assumptions driving the 2010-2020 national industry projections are:
  - GDP growth will average 3.0 % annually
  - Productivity growth will slow
  - U.S. labor force growth will slow
  - Unemployment will average 5.2% in 2020

# Health care will add the most new jobs in NE Minnesota between 2010 and 2020

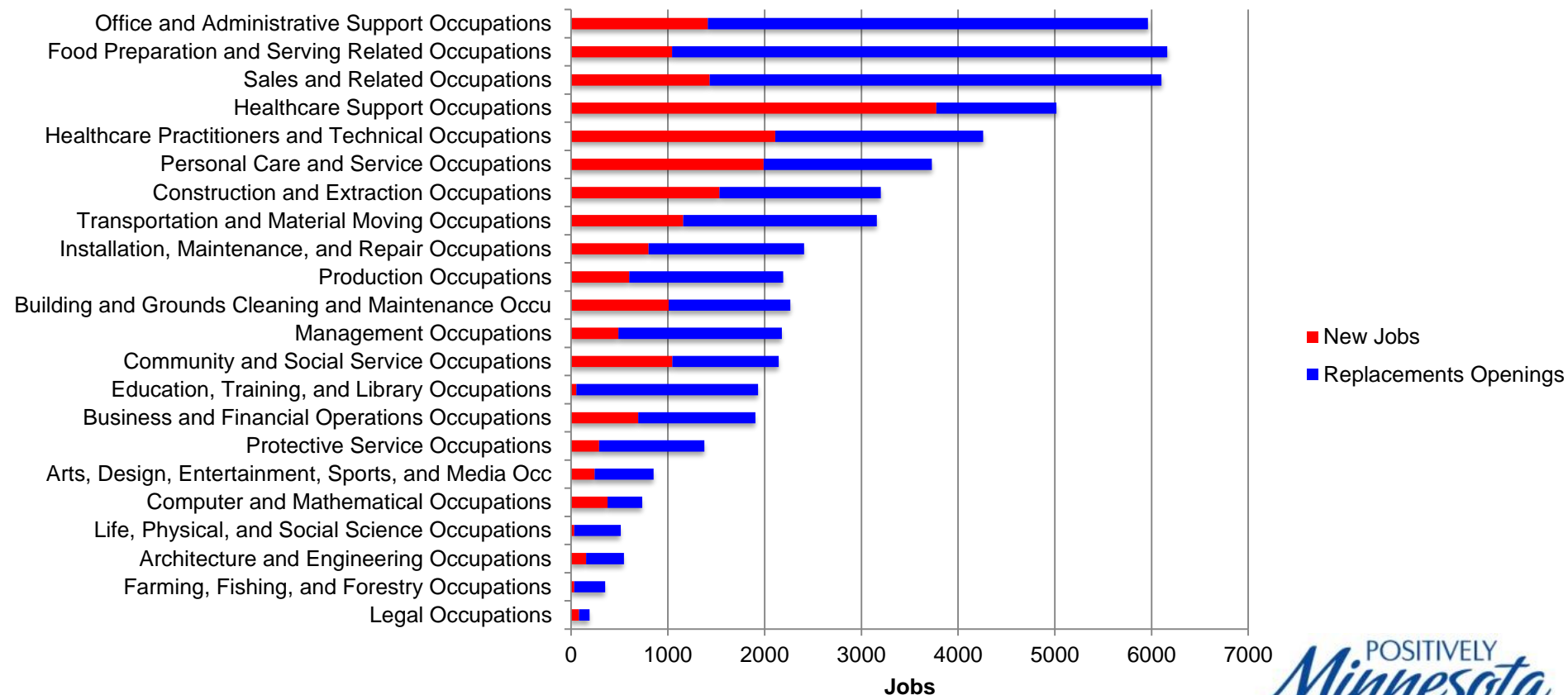
## Projected Job Openings by Industry 2010-2020



Source: MN Dept of Employment & Economic Development

# Office, food prep, and sales occupations will need the largest numbers of workers

## Projected Job Openings by Occupation 2010-2020



Source: MN Dept of Employment & Economic Development



# NE Region fastest growing occupations, 2010 to 2020

- Veterinary Technologists
- Home Health Aides
- Personal care Aides
- Helpers, Construction Trades
- Veterinarians
- Software Developers
- Computer Controlled Machine Tool Operators
- Brickmasons and Blockmasons
- Telecommunications Equipment Installers
- Structural Metal Fabricators and Fitters
- Security and Fire Alarm Systems Installers
- Cost Estimators
- Refuse and Recycled Materials Collectors
- Residential Advisors
- Cement Masons and Concrete Finishers
- Meeting, Convention, and Event Planners
- Pipelayers
- Exercise Physiologists
- Market Research Analysts
- Childcare Workers
- Councilors
- EMTs and Paramedics

Source: MN Dept of Employment & Economic Development

# NE Region occupations adding the most jobs, 2010 to 2020

- Home Health Aids
- Personal Care Aids
- Registered Nurses
- Nursing Aids, Orderlies, and Attendants
- Retail Salespersons
- Social and Human Service Assistants
- Childcare Workers
- Office Clerks, General
- Maids and Housekeeping Cleaners
- Food Prep and Serving Workers
- Heavy and Tractor-Trailer Truck Drivers
- Carpenters
- LPNs
- Security Guards
- Janitors and Cleaners
- Landscaping and Groundskeeping Workers
- Bookkeeping, Accounting, and Auditing Clerks
- Laborers and Freight, Stock, and Materials Movers
- Industrial Machinery Mechanics
- Electricians
- Retail Sales Supervisors

Source: MN Dept of Employment & Economic Development

# Jobs in demand by educational level

- High School Education or equivalent
  - Social and Human Service Assistants
  - Office Clerks, General
  - First Line Supervisors of Non-Retail Sales Workers
  - Secretaries and Administrative Assistants
  - Industrial Machinery Mechanics (w/ long term OJT)
  - Electricians (w/ apprenticeship)
  - First Line Supervisors of Housekeepers and Janitors
  - Mobile and Heavy Equipment Mechanics (w/ long term OJT)

Prerequisite educational levels from the Bureau of Labor Statistics

Source: MN Dept of Employment & Economic Development

# Jobs in demand by educational level

- Associate's Degree
  - Medical and Clinical Lab Techs
  - Civil Engineering Technicians
  - Radiologic Technologists
  - Cardiovascular Technologists
  - Dental Hygienists
  - Veterinary Technologists
  - Broadcast Technicians
  - Medical Equipment Repairers
  - Radiation Therapists

# Jobs in demand by educational level

- Bachelor's Degree
  - Marketing Managers
  - Computer Systems Analysts
  - Architects
  - Human Resources Specialists
  - Accountants and Auditors
  - Financial Managers
  - Medical and Health Services Managers
  - Network and Computer Systems Administrators
  - Architectural and Engineering Managers

# New LMI products in 2014

- “Better LMI”
  - Workforce supply and demand
  - Educational attainment of workers and employment outcomes of recent graduates by program of study
- Cost of Living
  - Link basic needs budget to hourly pay and current/future job opportunities
  - Statewide report and regional/county-level analysis

# Questions?

**Jan Saxhaug**

Regional Labor Market Analyst

Labor Market Information Office

218-302-8413

[jan.saxhaug@state.mn.us](mailto:jan.saxhaug@state.mn.us)